

# SEVEN UNIQUE TRAIL EXPERIENCES

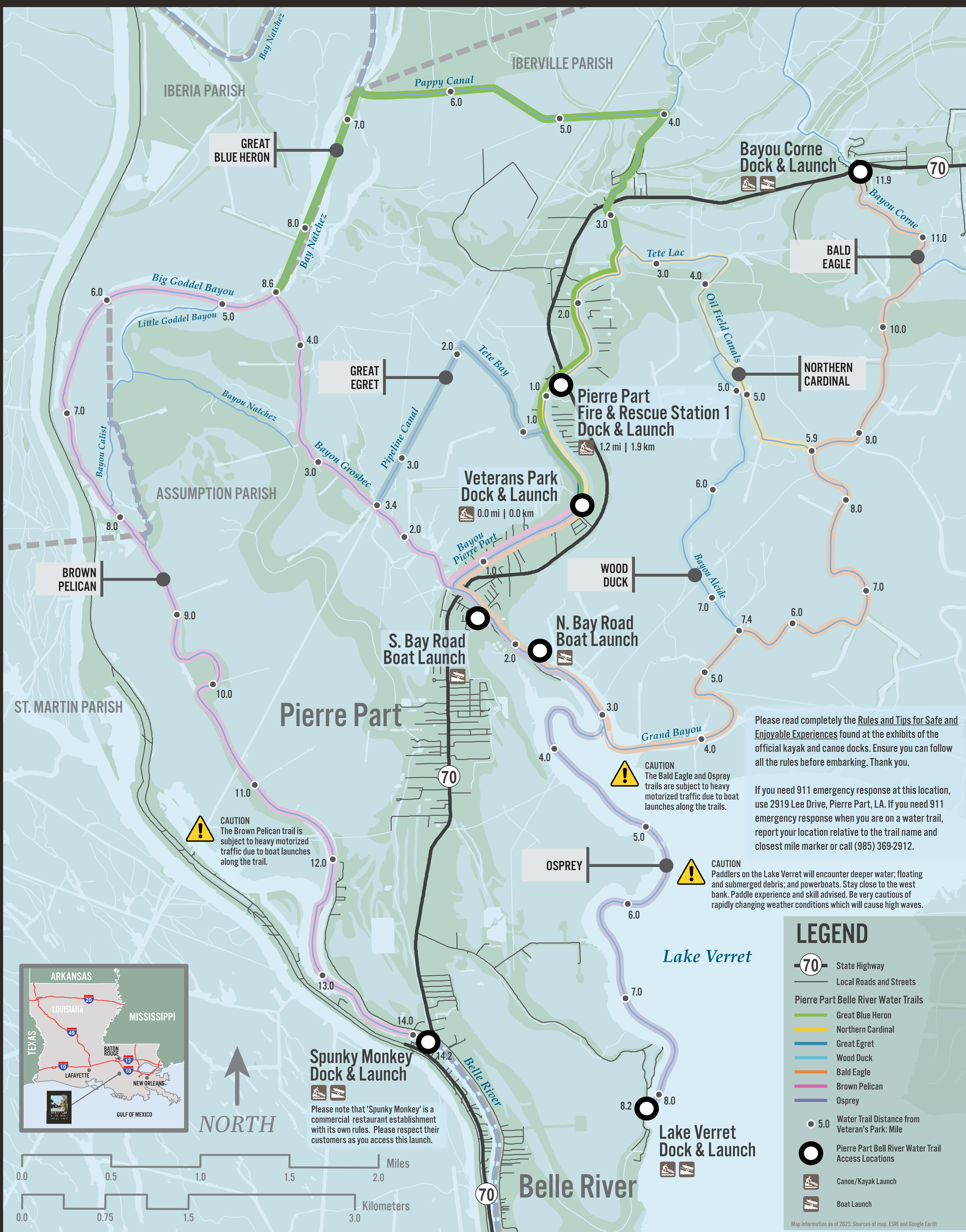


Scan this QR code to connect with the Pierre Part Belle River Water Trails website

Welcome to the seven Pierre Part Belle River Water Trails. Each Trail is identified by a beautiful local bird and a distinctive color. For more information, please visit [www.assumptionveteranspark.com](http://www.assumptionveteranspark.com) or scan this QR code.

Please take photos of the Water Trails map and other information topics here to take with you on your water adventure.

**CAUTION!** Do not rely on cellphone service in the remote portions of the Water Trails!



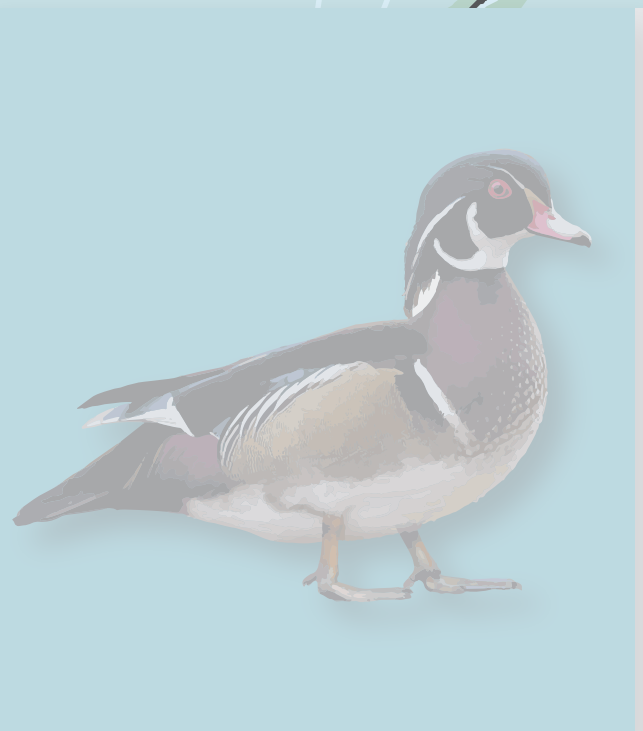
**GREAT BLUE HERON WATER TRAIL** Total Trail Length: 8.6 mi  
13.9 km  
Waterways of the Great Blue Heron Water Trail: Bayou Pierre Part, Pappy Canal, and Bay Nachez | INTERMEDIATE  
**Great Blue Heron | *Ardea Herodias***  
The tucked-in neck and long legs of the four-foot-tall Great Blue Heron do not hinder this stately bird from living well along our waterways. It strikes quickly to grab a fish or rodent for a fresh meal.



**NORTHERN CARDINAL WATER TRAIL** Total Trail Length: 5.9 mi  
9.4 km  
Waterways of the Northern Cardinal Water Trail: Bayou Pierre Part, Tet Loc, and Oil Field Canals | INTERMEDIATE  
**Northern Cardinal | *Cardinalis cardinalis***  
With its distinctive red color and a profile people can't take their eyes off, the Northern Cardinal has perhaps inspired more to open a bird field guide than any other bird. In this area, you can see a Northern Cardinal year-round.



**GREAT EGRET WATER TRAIL** Total Trail Length: 3.5 mi  
5.6 km  
Waterways of the Great Egret Water Trail: Bayou Pierre Part, Tet Bay, and Pipeland Canal | BEGINNER  
**Great Egret | *Ardea alba***  
A dazzling sight, the elegant white Great Egret inspired the conservation and first laws to protect birds. While wading along in the water, a quick jab of its yellow bill to an unsuspecting fish supplies the meal of the day.



**WOOD DUCK WATER TRAIL** Total Trail Length: 7.4 mi  
12.0 km  
Waterways of the Wood Duck Water Trail: Bayou Pierre Part, Tet Loc, Oil Field Canals, and Bayou Alcide | INTERMEDIATE  
**Wood Duck | *Aix sponsa***  
"Stunning" is one word to describe the feather colors and patterns for each the female and male Wood Duck. For nesting, they rely on crevasses in large trees or Wood Duck nest boxes installed along many of our waterways.



**BALD EAGLE WATER TRAIL** Total Trail Length: 11.9 mi  
19.6 km  
Waterways of the Bald Eagle Water Trail: Bayou Pierre Part, Bayou Grosbec, Grand Bayou, and Bayou Corne | DIFFICULT  
**Bald Eagle | *Haliaeetus leucocephalus***  
Chosen as the national symbol for the United States in 1782, the Bald Eagle soars in solitude and protection over our waterways. Once endangered, they are now thriving in Louisiana and across the country. Look for their nests high in Bald Cypress Trees.



**BROWN PELICAN WATER TRAIL** Total Trail Length: 14.2 mi  
22.9 km  
Waterways of the Brown Pelican Water Trail: Bayou Pierre Part, Bayou Grosbec, Bayou Nachez, Big Goddel Bayou, and Belle River | DIFFICULT  
**Brown Pelican | *Pelecanus occidentalis***  
When Louisiana chose the Brown Pelican as its state bird in 1966, this elegant bird faced extinction due to pesticides. With positive effects of regulation, the species now flourishes across the Pelican State. Watch as they dive to fill their bill with fish.



**OSPREY WATER TRAIL** Total Trail Length: 8.2 mi  
13.2 km  
Waterways of the Osprey Water Trail: Bayou Pierre Part, Bayou Grosbec, and Lake Verret | DIFFICULT  
**Osprey | *Pandion haliaetus***  
When an Osprey spots a prey fish, it hovers over the water and waits until it's in the perfect position to quickly dive in for the catch. You may see Osprey flying with a fish in their talons or perched atop a tree with the catch of the day.

Please read completely the [Rules and Tips for Safe and Enjoyable Experiences](#) found at the exhibits of the official kayak and canoe docks. Ensure you can follow all the rules before embarking. Thank you.

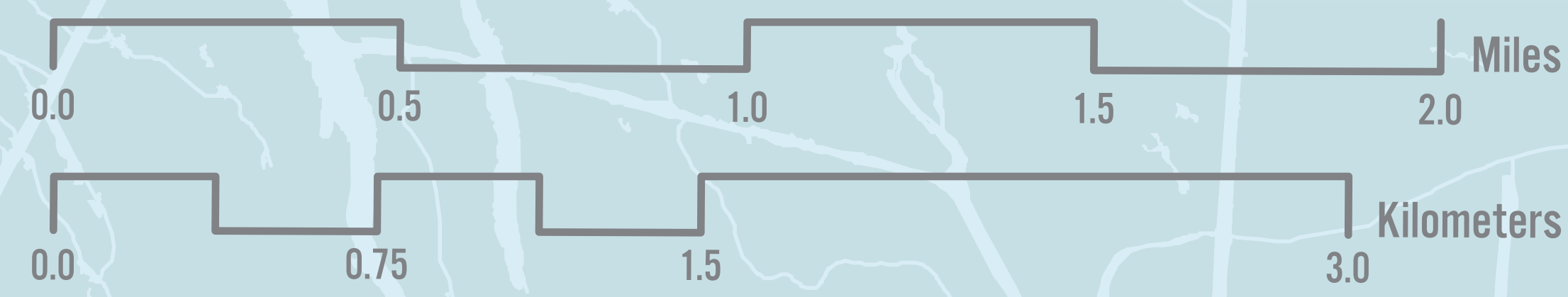
If you need 911 emergency response at this location, use 2919 Lee Drive, Pierre Part, LA. If you need 911 emergency response when you are on a water trail, report your location relative to the trail name and closest mile marker or call (985) 369-2912.

**CAUTION**  
The Bald Eagle and Osprey trails are subject to heavy motorized traffic due to boat launches along the trails.

**CAUTION**  
Paddlers on the Lake Verret will encounter deeper water; floating and submerged debris; and powerboats. Stay close to the west bank. Paddle experience and skill advised. Be very cautious of rapidly changing weather conditions which will cause high waves.

**CAUTION**  
The Brown Pelican trail is subject to heavy motorized traffic due to boat launches along the trail.

**Spunky Monkey Dock & Launch**  
Please note that 'Spunky Monkey' is a commercial restaurant establishment with its own rules. Please respect their customers as you access this launch.



**LEGEND**

- 70 State Highway
- Local Roads and Streets
- Pierre Part Belle River Water Trails**
  - Great Blue Heron
  - Northern Cardinal
  - Great Egret
  - Wood Duck
  - Bald Eagle
  - Brown Pelican
  - Osprey
- 5.0 Water Trail Distance from Veteran's Park: Mile
- Pierre Part Belle River Water Trail Access Locations
- Canoe/Kayak Launch
- Boat Launch

Map information as of 2023. Sources of map: ESRI and Google Earth